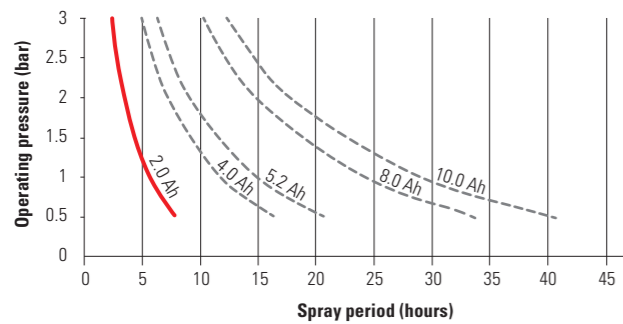
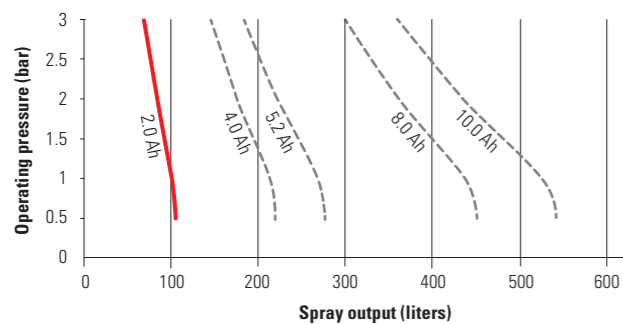


Spray period* REB 15 AC1 (Nozzle position spraying)



Spray output* REB 15 AC1 (Nozzle position spraying)



* per battery pack charging

Technical specifications REB 15 AC1

Tank volume	15 liters
Pressure range	0.5 – 3 bar
Battery pack (with scope of delivery REB 15 AC1)	18 V Li-Power / 2.0 Ah
Battery pack charging time	< 80 min
Nozzle type	Adjustable nozzle, 1.7 mm
Nozzle material	Brass
Flow rate (at 0.5 – 3 bar)	0.2 – 1.9 l/min
Gaskets	FPM (Viton) / NBR
Fitting assembly	Screw fitting
Pump	Diaphragm pump 12 V/DC
Min./max. temperature	5° C / 30° C
Dimensions (L x W x H)	240 x 340 x 570 mm
Empty weight with battery pack	4.5 kg
Sound pressure level	< 70 dB (A)

REB 15 AC1 (with battery pack 2.0 Ah / charger)	Art.No. 12070801
---	------------------

Battery pack 18 V Li-Power / 2.0 Ah	Art.No. 12070301
Battery pack 18 V Li-Power / 4.0 Ah	Art.No. 12071401
Battery pack 18 V Li-Power / 5.2 Ah	Art.No. 12072501
Battery pack 18 V LiHD / 8.0 Ah	Art.No. 12073601
Battery pack 18 V LiHD / 10.0 Ah	Art.No. 12100701
Quick-charger ASC 55 (230 V)	Art.No. 12070101

One battery, many solutions



www.cordless-alliance-system.com

Further Birchmeier products:



Art.No. 12076602 | v0125

Your Birchmeier distributor

BIRCHMEIER

Birchmeier Sprühtechnik AG
 Im Stetterfeld 1
 5608 Stetten
 Schweiz
 Telefon +41 56 485 81 81
 info@birchmeier.com
 www.birchmeier.com

REB 15 AC1 – Battery backpack sprayer

REB 15: Battery backpack sprayer for the demanding – with CAS power



15
Liter

3 bar

2



Made in Switzerland

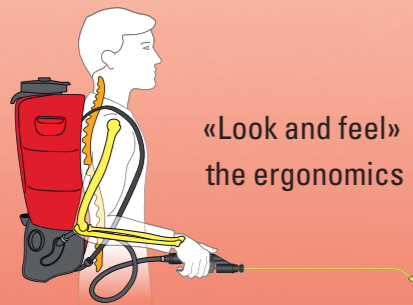
Pressure controlled battery backpack sprayer with CAS system: Versatile, ergonomic, compact

The well-proven concept of controlling the pressure by electronics has been complemented by the cross-manufacturer battery pack system. The quick-change system of the CAS battery pack enables uninterrupted working. The spraying pressure can be adjusted optimally with an application controller. Everything is monitored and controlled by the electronics: constant pressure, on, off, pump protection functions and battery charge state. No control wires in the trigger valve, therefore less prone to faults. The Birchmeier accessories can be used to their full extent.



Real work comfort

- Consistent spray pattern
- Drop size adjustable
- Re-defined ergonomics
- Hose outlet in front
- Click-belt system
- Quick-change system for battery pack
- 60 cm brass spray tube



«Look and feel»
the ergonomics

Electronically controlled

- Intelligent pressure control
- Operating pressure adjustable (0.5 to 3 bar)
- Energy efficient
- Protective setup for pump and battery pack



One battery, many solutions



- CAS* – Unlimited combinations
- Cross-manufacturer compatibility for over 300 devices
- Different battery packs obtainable (up to 10 Ah)
- Charge level is displayed by LED lights

* CAS (Cordless Alliance System) is a cross-manufacturer battery pack system of leading power tool brands

Well-proven Birchmeier technology

- Ergonomically shaped tank
- Robust pump
- 3-steps filter system
- Click-belt system
- Brass nozzle adjustable
- Top quality output assembly
- Large filling opening with strainer



Various applications

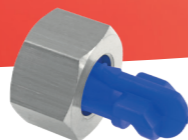
- Communal amenities
- Urban areas
- Cemeteries
- Large gardens
- Facility management



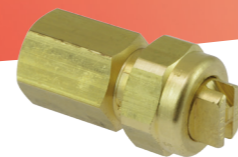
Vario Gun
Art.No. 11558501



Spray hood oval
Art.No. 10501606



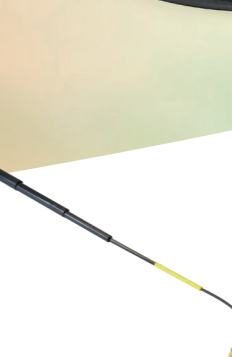
Herbicide floodjet nozzle
Art.No. 10501803-SB



Fanjet nozzle
Art.No. 11612810



Biofilter
Art.No. 11475701



XL 8 S Telescopic lance (7 m)
Art.No. 11935801



Spray boom aluminium
Art.No. 12033001



Stainless steel hand-cart H2
Art.No. 12022601



Further information

Accessories

More accessories
www.birchmeier.com